

# PLXH1001

## Colonoscopy training model

02

Digestive endoscope intervention training

### Main components

Appendix, cecum, ascending colon, transverse colon, descending colon, sigmoid colon, rectum, anus, anal sphincter, etc.

### Replaceable parts

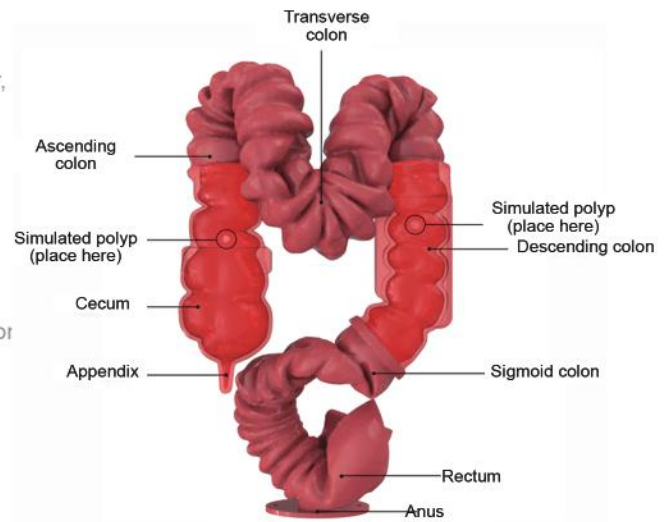
Simulated polyps

### Product function

It is applicable to the performance test, functional demonstration and training of interventional devices, such as soft lower gastrointestinal endoscope and biopsy devices; simulated polyps can be installed to train polypectomy and other treatments.

### Items supported

- Endoscopies of anus, rectum, sigmoid, descending, transverse, ascending, cecum and appendix;
- Recurrent LST (Laterally developing tumor) in the ascending colon;
- Four types of simulated polyps (types I-IV) installed on the ascending and the descending colon for observation and polypectomy training



### Main material

SLD silica gel

